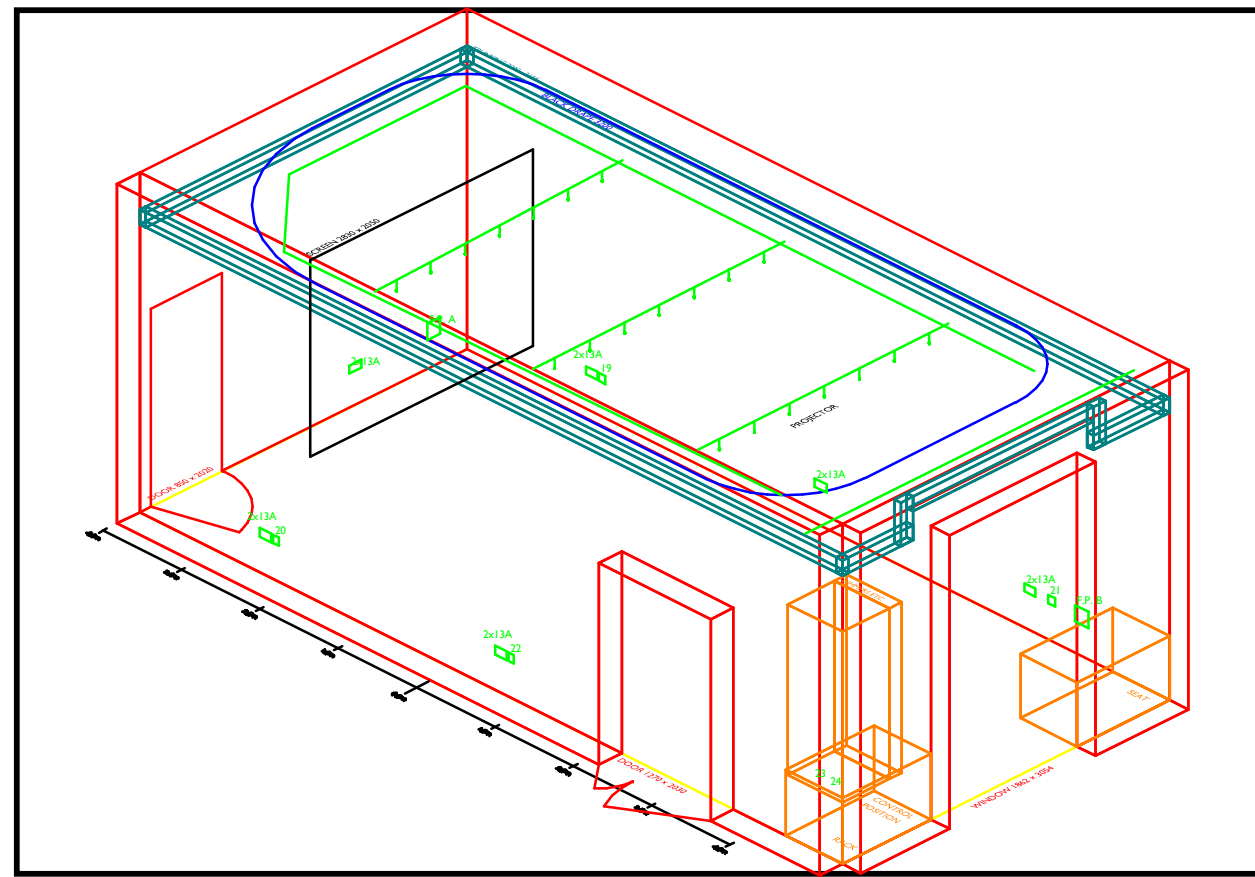
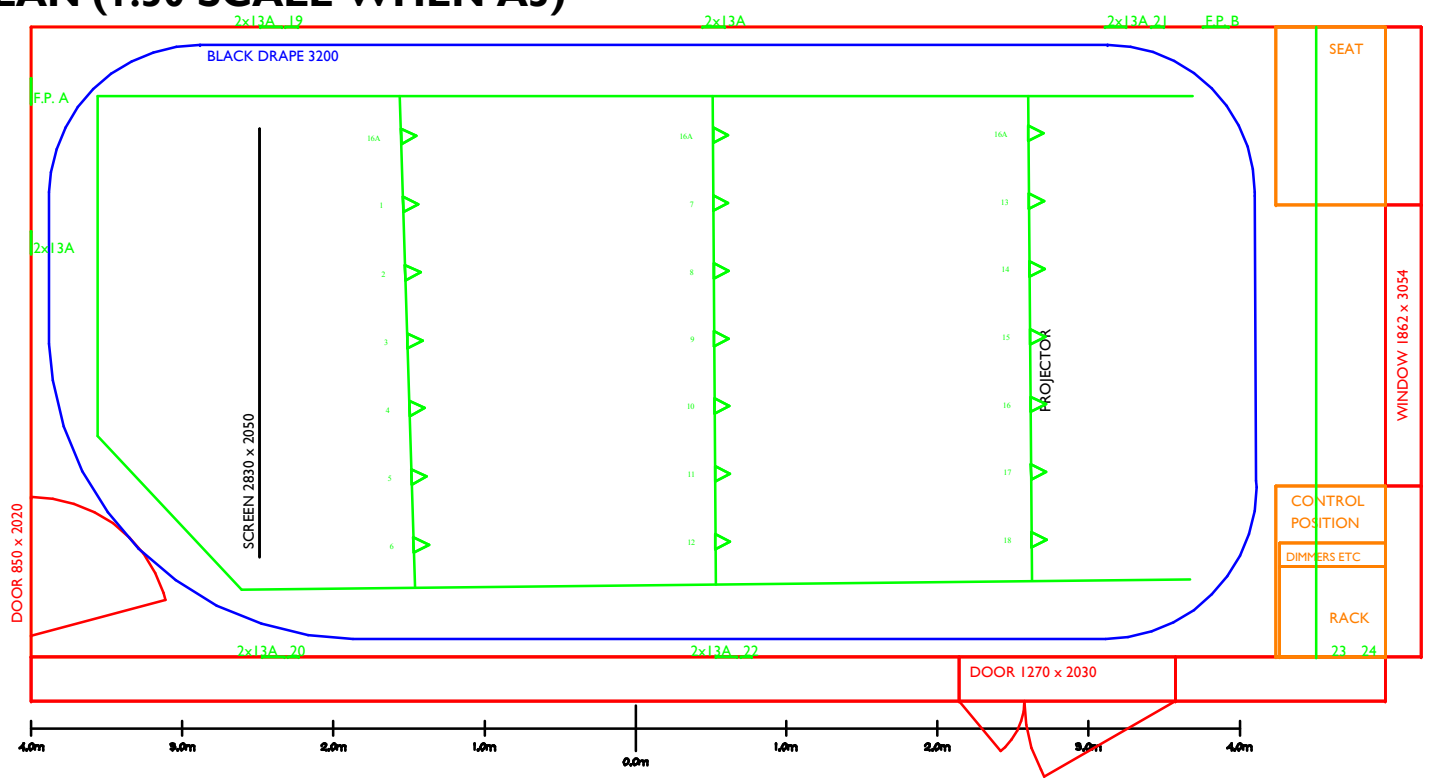
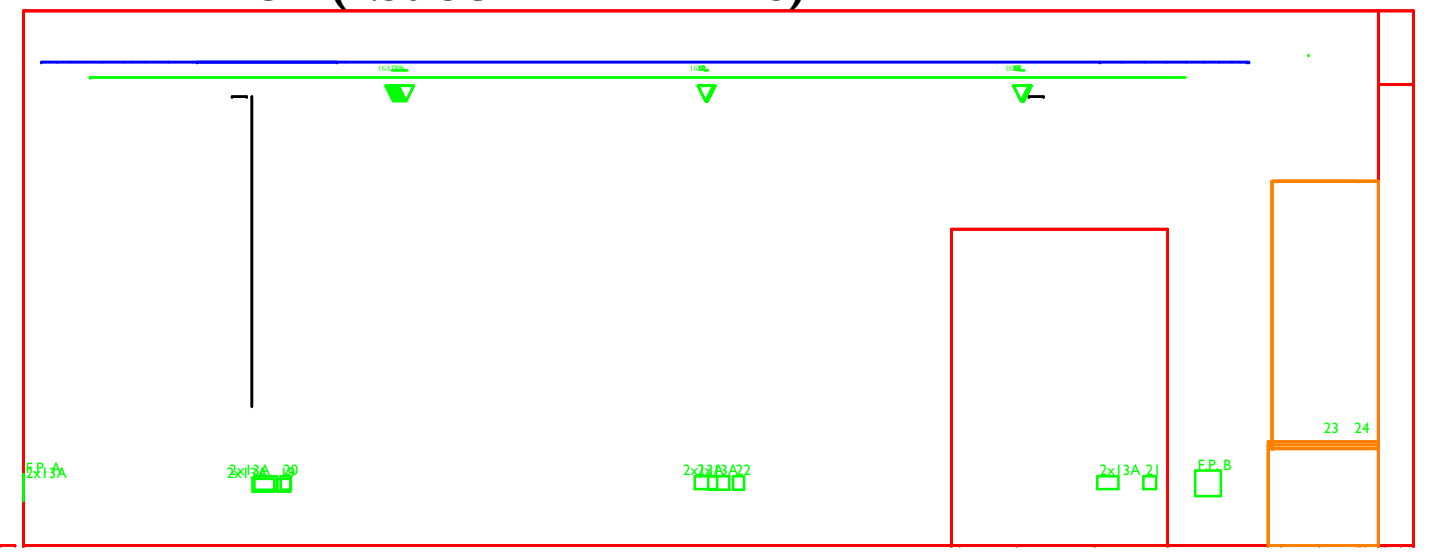


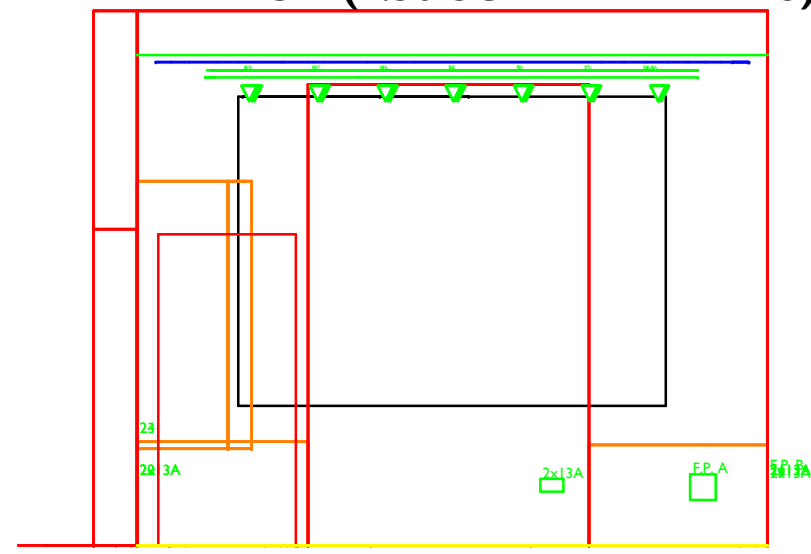
PLAN (1:50 SCALE WHEN A3)



SIDE ELEVATION (1:50 SCALE WHEN A3)



END ELEVATION (1:50 SCALE WHEN A3)



LIGHTING

24 channels of dimming hard patched 18 grid (3.1m) 4 floor level 2 in rack
 Houselights (4 x small flood) DMX channel 25; fluorescent working lights
 DMX Control by Zero88 Jester 24/48; DMX input at rack
 2 x Source4 Jnr 2x Minuette Profile 4 x Minuette Fresnel
 Other lanterns by negotiation with the management

SOUND / RACK

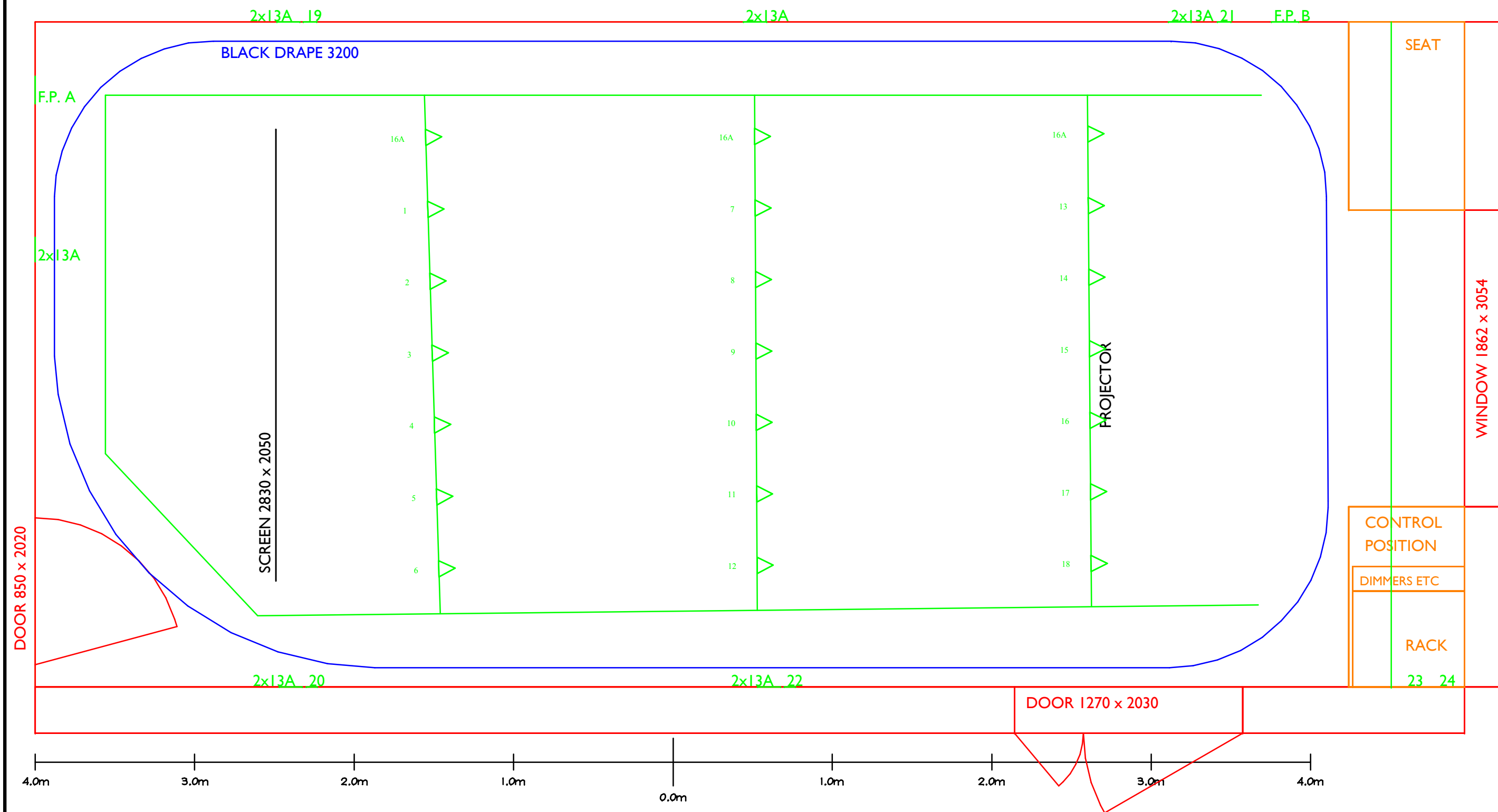
Allen & Heath GR05 mixer to 4 JBL Control 45 + JBL Sub
 CD Player and 3.5mm jack inputs
 Patch to facilities panels A,B and to main auditorium patch
 VGA connection to projector. Up down switch for screen by rack

ADC Theatre Larkum Studio first drawn Eddy Langley, Heather & Michael Darvell 1st April 2013 - <http://www.lampie.org/> for updates

| | |
|--------------------|--|
| PRODUCTION: | |
| COMPANY: | |
| DATES: | |
| DIRECTOR: | |
| DESIGNER: | |
| LIGHTING DESIGNER: | |

Drawing last updated 27/07/2013 11:12AM

STAGE PLAN (1:25 WHEN A3)



LIGHTING

24 channels of dimming hard patched 18 grid (3.1m) 4 floor level 2 in rack
 Houselights (4 x small flood) DMX channel 25; fluorescent working lights
 DMX Control by Zero88 Jester 24/48; DMX input at rack
 2 x Source4 Jnr 2x Minulette Profile 4 x Minulette Fresnel
 Other lanterns by negotiation with the management

SOUND / RACK

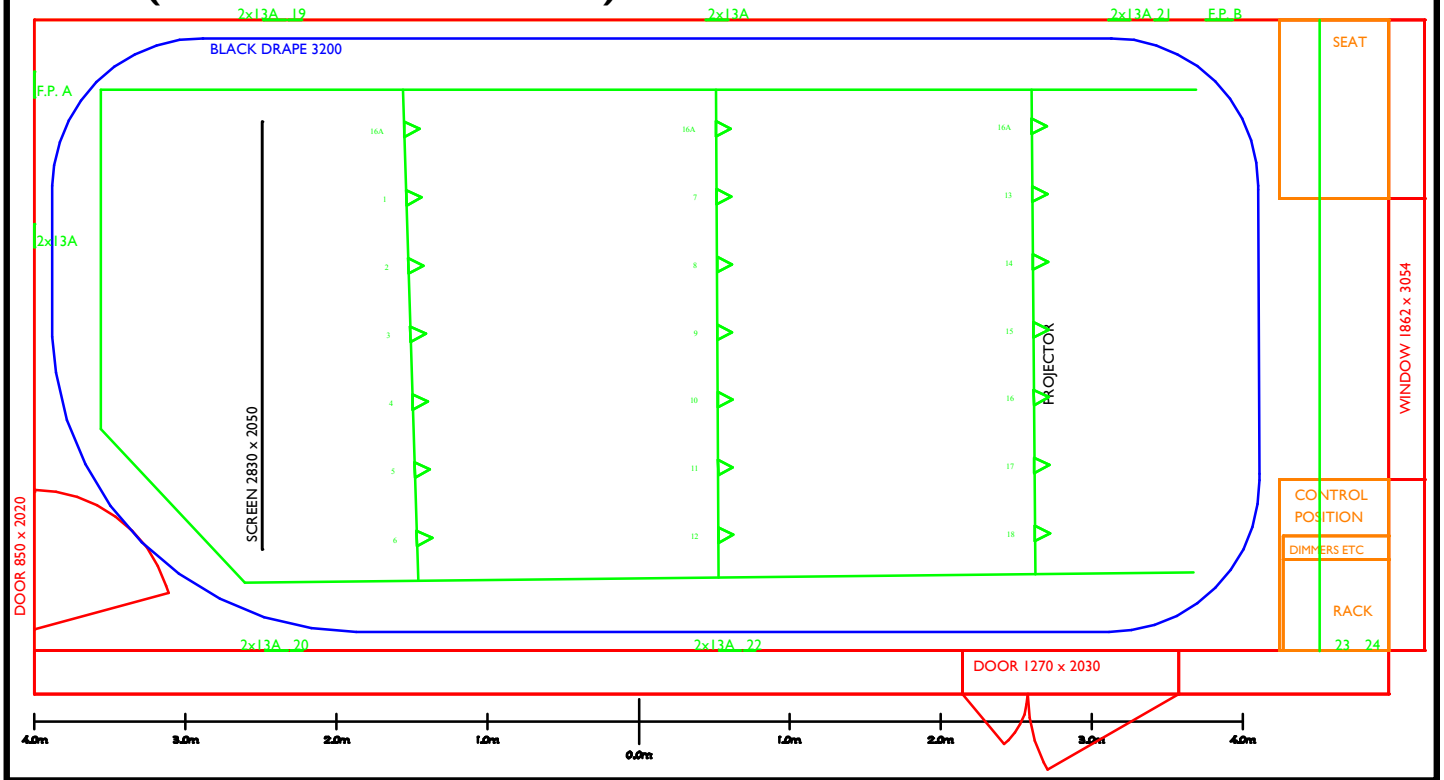
Allen & Heath GR05 mixer to 4 JBL Control 45 + JBL Sub
 CD Player and 3.5mm jack inputs
 Patch to facilities panels A,B and to main auditorium patch
 VGA connection to projector. Up down switch for screen by rack

ADC Theatre Larkum Studio first drawn Eddy Langley, Heather & Michael Darvell 1st April 2013 - <http://www.lampie.org/> for updates

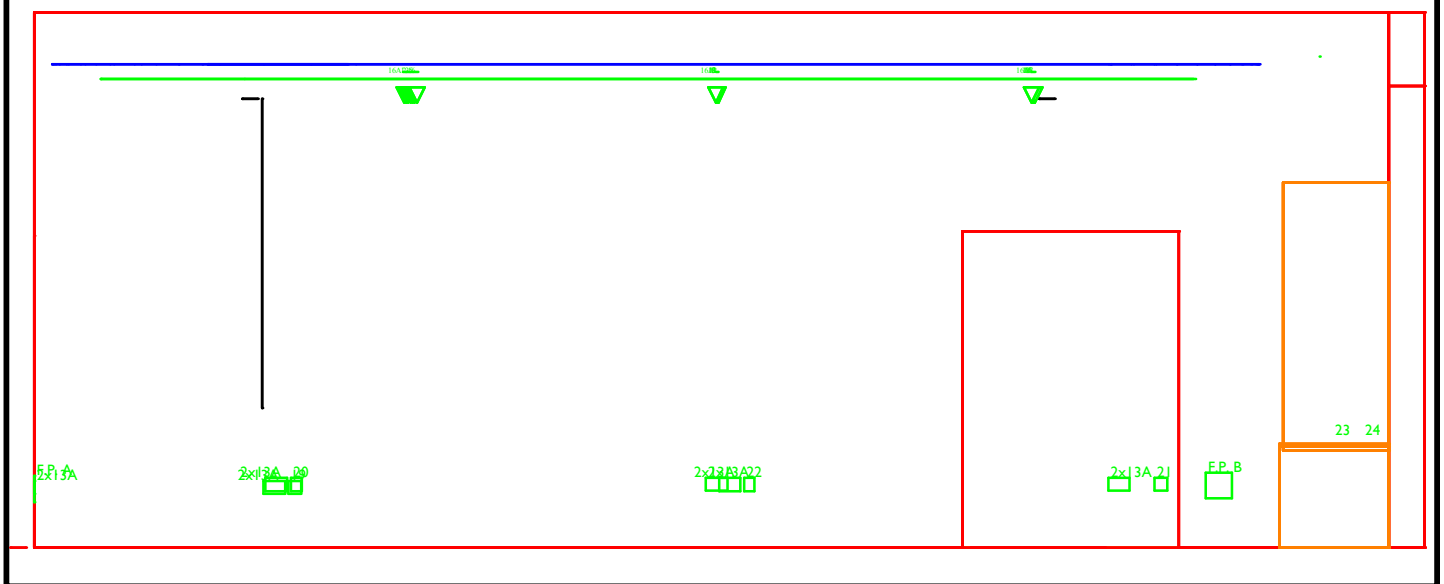
| | |
|--------------------|--|
| PRODUCTION: | |
| COMPANY: | |
| DATES: | |
| DIRECTOR: | |
| DESIGNER: | |
| LIGHTING DESIGNER: | |

Drawing last updated 27/07/2013 11:12AM

PLAN (1:50 SCALE WHEN A4)



SECTION (1:50 SCALE WHEN A4)



LIGHTING

24 channels of dimming hard patched 18 grid (3.1m) 4 floor level 2 in rack
 Houselights (4 x small flood) DMX channel 25; fluorescent working lights
 DMX Control by Zero88 Jester 24/48; DMX input at rack
 2 x Source4 Jnr 2x Minuette Profile 4 x Minuette Fresnel
 Other lanterns by negotiation with the management

SOUND / RACK

Allen & Heath GR05 mixer to 4 JBL Control 45 + JBL Sub
 CD Player and 3.5mm jack inputs
 Patch to facilities panels A,B and to main auditorium patch
 VGA connection to projector. Up down switch for screen by rack

ADC Theatre Larkum Studio first drawn Eddy Langley,
 Heather & Michael Darvell 1st April 2013 -
<http://www.lampie.org/> for updates

| | |
|--------------------|--|
| PRODUCTION: | |
| COMPANY: | |
| DATES: | |
| DIRECTOR: | |
| DESIGNER: | |
| LIGHTING DESIGNER: | |

Drawing last updated 27/07/2013 11:12AM